

07 - Fluorita de Iraí

<http://gmga.com.br/07-fluorita-de-irai/>

Herbert Pöllmann, Institut für Geowissenschaften, Universität Halle, Alemanha

Calcite	Gypsum	Baryte
Agate	Quartz	Karneol
Chalcedony	Lepidokrokite	Pseudomorphosis of quartz after anhydrite
Pseudomorphoses of quartz after calcite	Goethite	Fluorite

Fluorite can only sometimes be found in these geodes, mainly in spherical arrangements grown on amethyst. A summary on these fluorites is published in journal *Aufschluss* in 2010 (Pöllmann, 2010).

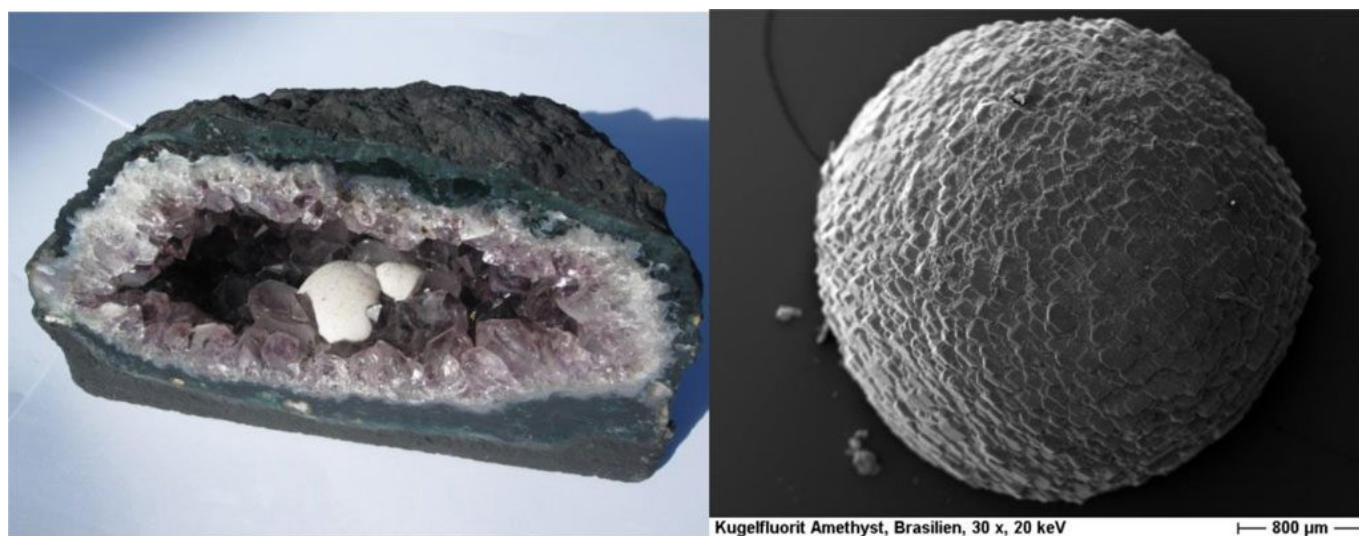


Figure 1. Amethyst geode with spherical aggregates of fluorite and SEM image showing a very nice sphere made of cubic crystals of this mineral. ($\varnothing = 2\text{cm}$ in image on the right).

REFERENCES

PÖLLMANN, H.: Kugelfluorit auf Amethyst aus Rio Grande do Sul/Brasilien. *Der Aufschluss*, Jg. 61 Heidelberg, 321-323, (2010).

PDF generated by Kalin's PDF Creation Station